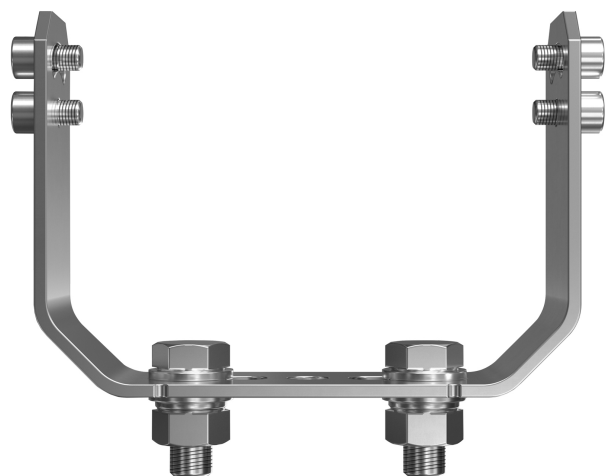


LEDiving Heavy Duty Mounting Kit PX



Mechaninis aksesuaras šviestuvams

11789

OSR LEDiving Heavy Duty Mounting Kit PX LEDPWL ACC 102 45x43x35mm

The LEDiving Heavy Duty Mounting Kit PX is compatible with all OSRAM LEDiving working lights of the Professional Series PX. It can be mounted to the vehicle with only two screws, it is quick and easy to mount, and this also allows a faster and easier installation of the LEDiving working lights Professional Series (PX). All components of the mounting kit are made of stainless steel, it has a vibration resistance of at least 12g rms and is therefore specially designed for use on heavy-duty vehicles and is particularly robust and resistant. In addition, the bracket can be adjusted to a tilt angle of up to +/- 30 degrees to direct the light of the working lights where it is needed.

KLASIFIKACIJA

Grupė	Aksesuarai apšvietimui
Klasė	Mechaniniai aksesuarai šviestuvams
Pavadinimas	LEDiving Heavy Duty Mounting Kit PX
Gamintojas	OSRAM
Serija	LEDiving
Tipas	Mounting Kit
EAN	4062172294782
Gamintojo kodas	4062172294782

PARAMETRAI

Spalva	Pilka
Ilgis [mm]	45
Plotis [mm]	43
Aukštis [mm]	35
Medžiaga	Nerūdijantis plienas
Skaidrus	Ne
Aksesuaro/atsarginės dalies tipas	Atraminis laikiklis
Aksesuaras	Taip