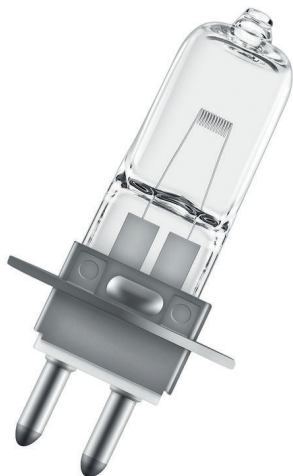


## 64251 HLX PG22 9X40 6V 20W

*Medicininės paskirties lempa*

36973



*OSR HLX64251 JC PG22 6V 20W Clear Halogen C-6 LCL14 9x40mm Lamp for medical applications*

*Product family benefits: Compared to standard lamps up to 10 % higher luminous efficacy (HLX). Instant light (HLX). Product family features: Xenon instead of krypton as the filler gas (XENOPHOT® HLX® versions). Luminous flux up to 10 % higher with same power consumption (XENOPHOT® HLX® versions). HLX® tungsten halogen low-voltage lamp with or without reflector. Dimmable (HLX). Areas of application: Lamps for special luminaires. Medical fiber optics (HLX).*

## KLASIFIKACIJA

Grupė	Lempos
Klasė	Medicininės paskirties lempos
Pavadinimas	64251 HLX PG22 9X40 6V 20W
Gamintojas	OSRAM
Serija	Specialty
Tipas	64251 HLX
EAN	4050300338316
Gamintojo kodas	4050300338316

## PARAMETRAI

Lizdas	PG22
Lempos galia [W]	20
Lempos įtampa [V]	6 - 6
Pritaikymas	Kita