



HF-Matchbox Blue

HF-M BLUE 124 SH TL/TL5/PL-L 230-240V

HF-Matchbox Blue is an affordable, reliable, compact, lightweight and high-frequency ballast for use with system wattages below 25 W in combination with TL mini, TL-D, TL5 and TL5c, PL-T/C, and PL-L/S lamps. The HF-M Blue range has a robust design, meets all relevant international safety and performance standards and has an energy efficiency index (CELMA EEI) of A2.

Product data

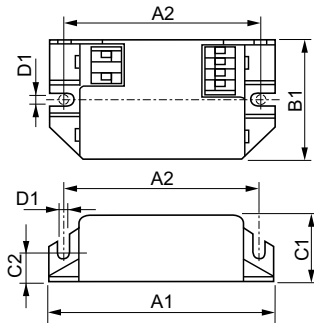
General Information		System characteristics	
Application code	mk1	Cable length from device to lamp	1.50 m
Lamp type	TL/TL5/PL-L	Cable length hot-wiring	0.30 m
Number of lamps	1 piece/unit	Wire strip length	8.0-9.0 mm
Number of products on MCB (16 A type B) (nom.)	60	Input terminal cross section	0.50-1.50 mm ²
Automatic restart	Yes	Output terminal cross section	0.50-1.50 mm ²
Operating and Electrical		Temperature	
Input voltage	230 to 240 V	T ambient (max.)	40 °C
Input frequency	50 to 60 Hz	T ambient (min.)	-10 °C
Power factor 100% load (nom.)	0.64	T-Case maximum (max.)	75 °C
Ignition time (max.)	0.5 s	Mechanical and Housing	
Mains voltage performance (AC)	-8%~+6%	Housing	SH
Mains voltage safety (AC)	-10%~+10%	Emergency Operation	
Power losses (nom.)	1.9-2.2 W	Battery voltage lamp ignition	194-254 V
Wiring		Approval and Application	
Connector type input terminals	Insert	IP classification	IP 20 [Ingress Protection 20]
Colour input terminals	Orange		
Colour output terminals	Grey		
Connector type output terminals	Insert		

HF-Matchbox Blue

Approval marks	F-Marking CE marking VDE certificate CB Certificate
Product Data	
Full product code	871150053638930
Order product name	HF-M BLUE 124 SH TL/TL5/PL-L 230-240V
EAN/UPC – product	8711500536389

Order code	53638930
Local Code	HFMBLUE124SH
Numerator – quantity per pack	1
Numerator – packs per outer box	50
Material no. (12NC)	913700417966
Net weight (piece)	0.040 kg

Dimensional drawing



HF-M BLUE 124 SH TL/TL5/PL-L 230-240V

Product

HF-M BLUE 124 SH TL/TL5/PL-L 230-240V

