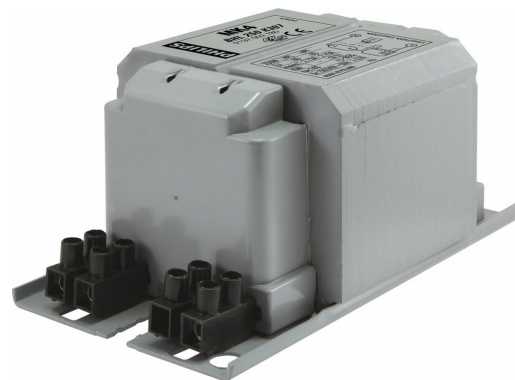


PHILIPS

Lighting



HID-Basic BHL MK4 for HPL/HPI

BHL 250 K307 230/240V 50Hz BC2-134

Impregnated electromagnetic copper/iron ballasts for HPL, HPI (Plus) and SON-H lamps

Product data

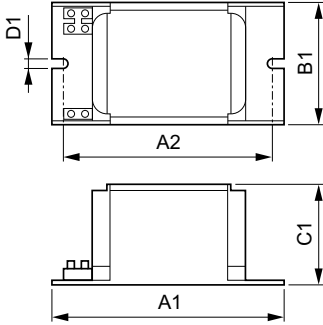
General Information		Connector Type	
Application Code	K307-A2		Screw
Design	BC2-134	System characteristics	
Lamp Type	HPL/HPI	Capacitor	18 μ F/250V
Number of Lamps	1 piece/unit	Rated Ballast-Lamp Power	250 W
Operating and Electrical		Recommended Ignitor	no ignitor for HPL-N for HPI-T ignitor SI51 (913619519966)
Input Voltage	230 V (default) or 240 V	Temperature	
Input Frequency	50 Hz	T-Storage (Max)	130 °C
Power Factor 100% Load (Nom)	0.85	T-Storage (Min)	-30 °C
Mains Voltage Performance (AC)	-8%+6%	T-Winding (Max)	130 °C
Mains Voltage Safety (AC)	-10%+10%	Delta-T Normal Conditions	80/85 °C
Input Current with PF Correction	1.40 A	Approval and Application	
Input Current without PF Correction	2.13 A	Approval Marks	CE marking ENEC certificate
Power Factor without PF Compensation (Nom)	0.55	Product Data	
Power Losses (Nom)	18.5/19.4 W	Full product code	872790088701300
Wiring		Order product name	BHL 250 K307-A2 230/240V 50Hz BC2-134
Wire Striplength	7.0 mm	EAN/UPC - Product	8711500881588
Ballast Contact Wire Cross Section	1.00-2.50 mm ²		

HID-Basic BHL MK4 for HPL/HPI

Order code	88701300
Numerator - Quantity Per Pack	1
Numerator - Packs per outer box	6
Material Nr. (12NC)	913700278026

Net Weight (Piece)	2.245 kg
--------------------	----------

Dimensional drawing



BHL 250 K307 230/240V 50Hz BC2-134

Product	D1	C1	A1	A2	B1
BHL 250 K307-A2 230/240V 50Hz BC2-134	6.2 mm	65.0 mm	134.0 mm	113.0 mm	76.0 mm

