



# HID ignitors for series systems

## SI 52 220-240V 50/60Hz

HID ignitors for series systems

### Product data

General Information	
Application Code	52
Lamp Type	HPI
Number of Lamps	1 piece/unit
Operating and Electrical	
Input Voltage	220 to 240 V
Input Frequency	50 to 60 Hz
Igniton Type	Parallel
Number of Ignition Pulses	1
Ignition Voltage (Max)	0.75 kV
Response Voltage	190 V
Mains Voltage Performance (AC)	-8% - +6%
Mains Voltage Safety (AC)	-10% - +10%
Power Losses (Nom)	1.0 W
Wiring	
Cable Capacity Wires Device to Lamp (Nom)	35 nF
Wire Striplength	6.0 mm
Ballast Contact Wire Cross Section	0.70-2.50 mm <sup>2</sup>
Connector Type	Screw

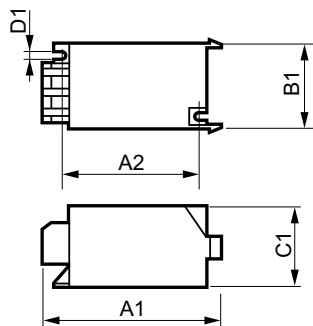
System characteristics	
Rated Ballast-Lamp Power	1000 W
Temperature	
T-Ambient (Max)	75 °C
T-Ambient (Min)	-20 °C
T-Storage (Max)	80 °C
T-Storage (Min)	-25 °C
T-Case Maximum (Max)	80 °C
Mechanical and Housing	
Housing	SNI-85
Approval and Application	
Approval Marks	CE marking ENEC certificate
Product Data	
Full product code	871150091554230
Order product name	SI 52 220-240V 50/60Hz
EAN/UPC - Product	8711500915542
Order code	913619529966
Numerator - Quantity Per Pack	1
Numerator - Packs per outer box	48

## HID ignitors for series systems

Material Nr. (12NC) 913619529966

Net Weight (Piece) 0.060 kg

### Dimensional drawing



SI 52 220-240V 50/60Hz

Product	D1	C1	A1	A2	B1
SI 52 220-240V 50/60Hz	4.3 mm	38.0 mm	84.5 mm	65.0 mm	41.0 mm

