



HF-Matchbox Red

HF-M RED 118 SH PL-C/PL-T 230-240V

HF-Matchbox Red is an affordable, reliable, compact, lightweight and high-frequency ballast for use with system wattages below 25 W in combination with TL mini, TL-D, TL5 and TL5c, PL-T/C, and PL-L/S lamps. The HF-M Red range has a robust design, meets all relevant international safety and performance standards and has an energy efficiency index (CELMA EEI) of A2.

Product data

General Information	
Lamp type	PL-C/PL-T
Number of lamps	1 piece/unit
Number of products on MCB (16 A type B) (nom.)	73
Automatic restart	Yes
Operating and Electrical	
Input voltage	230 to 240 V
Input frequency	50 to 60 Hz
Power factor 100% load (nom.)	0.62
Ignition time (max.)	0.45 s
Mains voltage performance (AC)	-8%+6%
Mains voltage safety (AC)	-10%+10%
Power losses (nom.)	2.0-2.1 W
Wiring	
Connector type input terminals	Insert
Colour input terminals	Orange
Colour output terminals	Grey
Connector type output terminals	Insert
Cable length from device to lamp	1.50 m

Cable length hot-wiring	0.30 m
Wire strip length	8.0-9.0 mm
Input terminal cross section	0.50-1.50 mm ²
Output terminal cross section	0.50-1.50 mm ²

System characteristics	
Rated ballast-lamp power	18 W
Rated lamp power on PL-T	18 W
System power on PL-T	17.3 W
Power loss on PL-T	2.1 W
Lamp power on PL-T	15.2 W
System power on PL-C	17.9 W
Rated lamp power on PL-C	18 W
Power loss on PL-C	2 W
Lamp power on PL-C	15.9 W

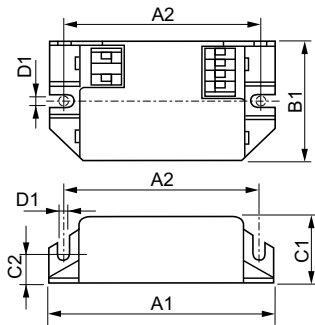
Temperature	
T ambient (max.)	40 °C
T ambient (min.)	-10 °C
T-Case maximum (max.)	75 °C

HF-Matchbox Red

Mechanical and Housing	
Housing	SH
Emergency Operation	
Battery voltage lamp ignition	194-254 V
Approval and Application	
IP classification	IP 20 [Ingress Protection 20]
Approval marks	F-Marking CE marking ENEC certificate CB Certificate
Product Data	
Full product code	871150092802330

Order product name	HF-M RED 118 SH PL-C/PL-T 230-240V
EAN/UPC – product	8711500928023
Order code	92802330
Local Code	HFMRED118SH
Numerator – quantity per pack	1
Numerator – packs per outer box	50
Material no. (12NC)	913700423466
Net weight (piece)	0.034 kg

Dimensional drawing



HF-M RED 118 SH PL-C/PL-T 230-240V

Product	D1	C1	C2	A1	A2	B1
HF-M RED 118 SH PL-	4.4 mm	22.0	10.0	80.0	70.0	40.0
C/PL-T 230-240V		mm	mm	mm	mm	mm

