



# MASTER LEDtube InstantFit HF T8

## MASTER LEDtube HF 1200mm SO 16.5W 865 T8 RS

Philips MASTER LEDtube InstantFit T8 integrates a LED light source into a traditional fluorescent form factor. Its unique design creates a perfectly uniform visual appearance which cannot be distinguished from traditional fluorescent. Philips MASTER LEDtube InstantFit T8 is the ideal solution for customers who have higher light requirements and want to maximize value over lifetime.; Full energy savings & longer lifetime result in attractive payback times and TCO benefits.

### Product data

#### General Information

Cap-Base	G13 [ Medium Bi-Pin Fluorescent]
Main Application	Industrial
Nominal Lifetime (Nom)	50000 h
Switching Cycle	50000X
B50L70	50000 h

#### Light Technical

Color Code	865 [ CCT of 6500K]
Beam Angle (Nom)	160 °
Luminous Flux (Nom)	1600 lm
Luminous Flux (Rated) (Nom)	1600 lm
Rated Beam Angle	160 °
Correlated Color Temperature (Nom)	6500 K
Color Consistency	<6
Color Rendering Index (Nom)	83

LLMF At End Of Nominal Lifetime (Nom) 70 %

#### Operating and Electrical

Input Frequency	25000-75000 Hz
Power (Rated) (Nom)	16.5 W
Lamp Current (Nom)	280 mA
Starting Time (Nom)	0.5 s
Warm Up Time to 60% Light (Nom)	instant full light s
Power Factor (Nom)	0.9
Voltage (Nom)	50-100 V

#### Temperature

T-Ambient (Max)	35 °C
T-Ambient (Min)	-20 °C
T-Storage (Max)	65 °C
T-Storage (Min)	-40 °C

# MASTER LEDtube InstantFit HF T8

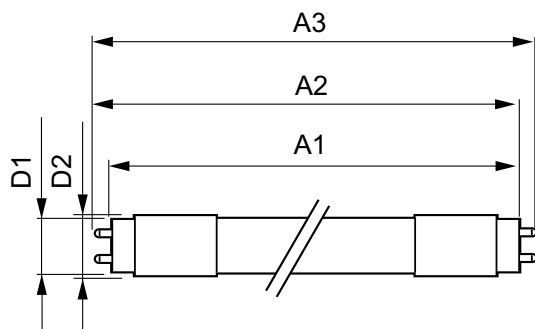
T-Case Maximum (Nom)	45 °C
<b>Controls and Dimming</b>	
Dimmable	No
<b>Mechanical and Housing</b>	
Product Length	1200 mm
<b>Approval and Application</b>	
Energy Efficiency Label (EEL)	A
Energy Saving Product	Yes
Suitable For Accent Lighting	No
Approval Marks	CE marking RoHS compliance KEMA Keur certificate

Energy Consumption kWh/1000 h	20 kWh
<b>Product Data</b>	
Full product code	871829172887000
Order product name	MASTER LEDtube HF 1200mm SO 16.5W 865 T8 RS
EAN/UPC - Product	8718291728870
Order code	929000284502
Numerator - Quantity Per Pack	1
Numerator - Packs per outer box	10
Material Nr. (12NC)	929000284502
Net Weight (Piece)	0.360 kg

## Warnings and Safety

- NOTES: The overall energy efficiency and light distribution of any installation that uses these lamps are determined by the design of the installation.

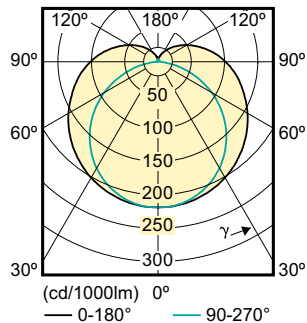
## Dimensional drawing



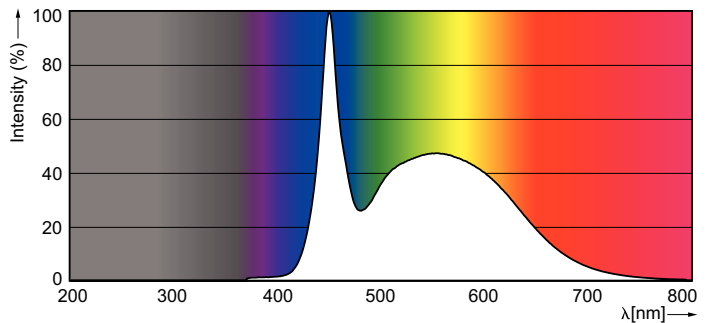
LEDtube HF 1200mm SO 16.5W 865 T8

Product	D1	D2	A1	A2	A3
MASTER LEDtube HF 1200mm SO 16.5W 865 T8 RS	25.68 mm	28 mm	1198.0 mm	1205.0 mm	1212.0 mm

## Photometric data



LEDtube HF 1200mm SO 16.5 W T8



LEDtube HF 1200mm SO 16.5 W /865 T8

## MASTER LEDtube InstantFit HF T8

