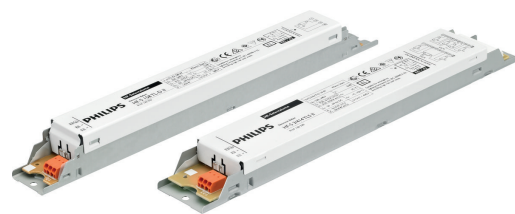


PHILIPS

Lighting



HF-Selectalume II for TL5 lamps

HF-S 214-35 TL5 II 220-240V 50/60Hz

HF-Selectalume II is the most cost-effective, reliable, slim and affordable fluorescent solution, with highly disruptive technology for energy saving, system flexibility and unsurpassed performance. The cost-saving HF-Selectalume II has a robust design which meets all relevant international safety and performance standards. HF-Selectalume II is intended for use with indoor lighting fixtures such as spotlights, downlights and recessed luminaires, which are largely used in office, retail, industry, hotel, restaurant and other applications where control devices are installed with occasional On/Off switching activity

Product data

General Information	
Application code	HE II
Type version	-
Lamp type	TL5
Number of lamps	2 piece/unit
Number of products on MCB (16 A type B) (nom.)	28
Automatic restart	Yes
Operating and Electrical	
Input voltage	220 to 240 V
Input frequency	50 to 60 Hz
Operating frequency (nom.)	45 kHz
Crest factor (nom.)	1.7
Power factor 100% load (nom.)	0.99
Preheat time	0.5 s
Mains voltage performance (AC)	202-254V -8% - +6%

Mains voltage safety (AC)	198-264V -10% - +10%
Earth leakage current (max.)	0.5 mA
Inrush current width	0.25 ms
Ballast factor (nom.)	1
Power losses (nom.)	2.0-5.5 W
Inrush current peak (max.)	24 A
Wiring	
Connector type input terminals	WAGO 744 connector
Cable capacity output wires mutual (max.)	200 pF
Connector type output terminals	WAGO 744 connector [Suitable for manual wiring]
Cable length hot-wiring	0.75 m
Wire strip length	8.0-9.0 mm
Dual fixture master/slave	Possible, lamp wires 2m max. length [Master/Slave operation possible]
Input terminal cross section	0.50-1.00 mm ²

HF-Selectalume II for TL5 lamps

Output terminal cross section	0.50-1.00 mm ²
Cable capacity cold output wires – earth (max.)	200 pF
Cable capacity hot output wires – earth (max.)	200 pF

System characteristics

Rated ballast-lamp power	14-35 W
Rated lamp power on TL5 HE	14/35 W
System power on TL5 HE	30.5/76.5 W
Lamp power on TL5 HE	28.5/71.0 W
Power loss on TL5 HE	2.0/5.5 W

Temperature

T ambient (max.)	55 °C
T ambient (min.)	-20 °C
T storage (max.)	50 °C
T storage (min.)	-40 °C
T case lifetime (nom.)	75 °C
T-Case maximum (max.)	75 °C

Mechanical and Housing

Housing	L360x30x22
---------	------------

Emergency Operation

Nominal light output after 60 seconds	100% of EBLF
Normal operating voltage (DC)	220-240 V
Battery voltage guaranteed operation	176-275 V

Battery voltage guaranteed ignition	186-275 V
Emergency ballast lumen factor (EBLF) (nom.)	100 %
Nominal light output after 5 seconds	50% of EBLF

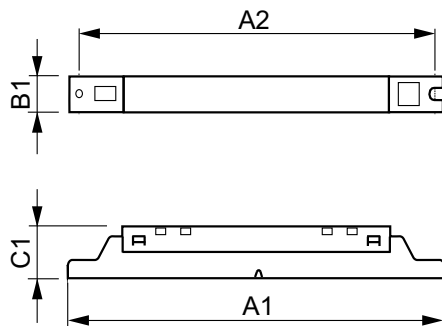
Approval and Application

Energy efficiency index	A2 BAT
IP classification	IP 20 [Ingress Protection 20]
EMI 9 kHz... 30 MHz	EN55015
Vibration standard	IEC68-2-6 F c
Bumps standard	IEC 68-2-29 Eb
Approval marks	CE marking ENEC certificate CCC certificate C-Tick certificate TISI marking SIRIM approval CCC certificate
Humming and noise level	30 dB(A)

Product Data

Full product code	871829175844000
Order product name	HF-S 2 14-35 TL5 HE II 220-240V
EAN/UPC – product	8718291758440
Order code	75844000
Local Code	HFS21435TL5HEII
Numerator – quantity per pack	1
Numerator – packs per outer box	12
Material no. (I2NC)	913713042166
Net weight (piece)	0.245 kg

Dimensional drawing



HF-S 2 14-35 TL5 HE II 220-240V 50/60Hz

Product	D1	C1	A1	A2	B1
HF-S 2 14-35 TL5 HE II 220-240V	4.2 mm	22.0 mm	360.0 mm	350.0 mm	30.0 mm

HF-Selectalume II for TL5 lamps

