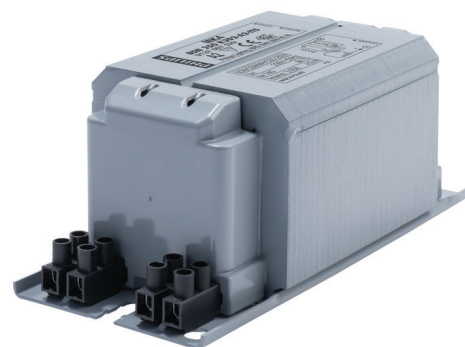


# PHILIPS

## Lighting



# HID-Basic BSN/BMH MK4 semi-parallel for SON/CDO/CDM/MH/ HPI

## BSN 250 K302-A2-ITS 230V 50Hz

Impregnated electromagnetic copper ballasts for use with an external semi-parallel ignitor for CDM, CDO, MH, HPI (Plus) and SON lamps

### Product data

General Information		Power Losses (Nom)	
Application Code	K302-A2-ITS		26.1 W
Design	BC2-160	Wiring	
Lamp Type	SON/MH/CDM/CDO	Wire Striplength	6.0 mm
Number of Lamps	1 piece/unit	Ballast Contact Wire Cross Section	2.5 mm <sup>2</sup>
		Connector Type	Screw
Operating and Electrical		System characteristics	
Input Voltage	230 V	Capacitor	32µF/250V
Input Frequency	50 Hz	Rated Ballast-Lamp Power	250 W
Power Factor 100% Load (Nom)	0.85	Recommended Ignitor	for SON/CDO/CDM lamps ignitor SKD 578 (913700655366)
Mains Voltage Performance (AC)	-8% - +6%	Temperature	
Mains Voltage Safety (AC)	-10% - +10%	T-Storage (Max)	130 °C
Input Current with PF Correction	1.4 A	T-Storage (Min)	-30 °C
Input Current without PF Correction	3 A	T-Winding (Max)	140 °C
Power Factor without PF Compensation (Nom)	0.4		

## HID-Basic BSN/BMH MK4 semi-parallel for SON/CDO/CDM/MH/HPI

Delta-T Normal Conditions	70 °C
---------------------------	-------

### Approval and Application

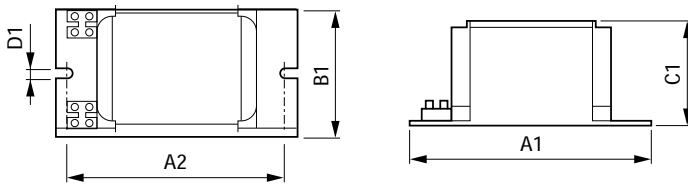
Active Temperature Protection	Yes
Approval Marks	CE marking ENEC certificate

### Product Data

Full product code	871869674102300
Order product name	BSN 250 K302-A2-ITS 230V 50Hz

EAN/UPC - Product	8718696741023
Order code	913700752926
Numerator - Quantity Per Pack	1
Numerator - Packs per outer box	6
Material Nr. (12NC)	913700752926
Net Weight (Piece)	3.250 kg

### Dimensional drawing



Product	A1	A2	B1	C1	D1
BSN 250 K302-A2-ITS 230V 50Hz	160 mm	139 mm	76 mm	65 mm	6.2 mm

BSN 250 K302-A2-ITS 230V 50Hz

