

Product datasheet

Emergency Lighting 8 W/840

LUMILUX T5 Short EL | Tubular fluorescent lamps 16 mm, short, for emergency lighting, with G5 base

- Public buildings Industry Shops Supermarkets and department stores



- Very good luminous flux maintenance throughout the life of the lamp Optimized for emergency power operation Slim and compact



Product datasheet

Technical data

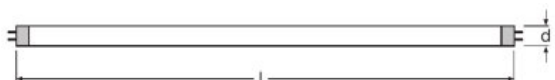
Electrical data

Nominal wattage	8.00 W
Rated lamp efficacy (HF data 25 °C)	Under clarification by authority and standardization body
Rated wattage	7.10 W
Nominal current	0.15 A

Photometrical data

Rated lamp efficacy (standard condition)	63 lm/W
Color rendering index Ra	≥80
Rated luminous flux	450 lm
Luminous flux at	450 lm
Light color	840
Rated color temperature	4000 K
Nominal luminous flux	450 lm
Light color (designation)	LUMILUX Cool White
Rated LLMF at 2,000 h	0.80
Rated LLMF at 4,000 h	0.74
Rated LLMF at 6,000 h	0.71
Rated LLMF at 8,000 h	0.69
Color temperature	4000 K
Luminous flux	450 lm

Dimensions & weight



Tube diameter	16 mm
Length	288.0 mm
Length with base excl. base pins/connection	288.00 mm

Product datasheet

Diameter	16.0 mm
Product weight	26.00 g
Outer bulb	T16
Maximum diameter	16.0 mm

Temperatures & operating conditions

Rated ambient temp.w.max.luminous flux	35.0 °C
--	---------

Lifespan

Lifespan	8000 h ¹⁾
Rated lamp survival factor at 2,000 h	0.99
Rated lamp survival factor at 4,000 h	0.99
Rated lamp survival factor at 6,000 h	0.95
Rated lamp survival factor at 8,000 h	0.81
Operation mode LLMF/LSF	HF
Rated lamp life time	10000 h

¹⁾ With CCG/LLCG

Additional product data

Base (standard designation)	G5
Mercury content	2.5 mg
Appropriate disposal acc. to WEEE	Yes

Capabilities

Suitable for indoor	Yes
---------------------	-----

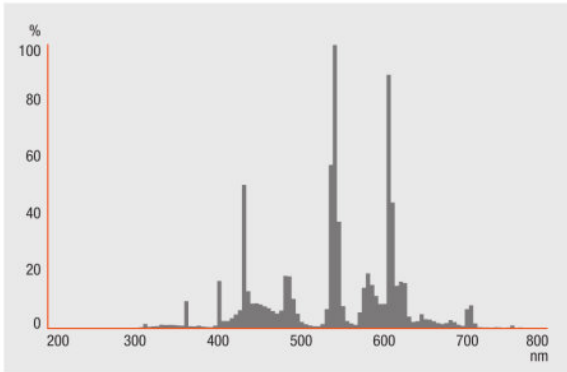
Certificates & standards

Energy efficiency class	A
Energy consumption	8 kWh/1000h

Country specific categorizations

Order reference	L 8W/840 EL
-----------------	-------------

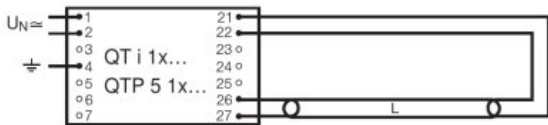
Light Distribution



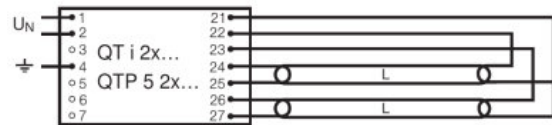
FL_840

System guarantee

OSRAM System+ Guarantee in combination with OSRAM ECGs



QUICKTRONIC INTELLIGENT QT i 1x QTP 5 1x



QUICKTRONIC INTELLIGENT QT i 2x QTP 5 2x

Logistical Data

Product code	Product description	Packaging unit (Pieces/Unit)	Dimensions (length x width x height)	Volume	Gross weight
--------------	---------------------	------------------------------	--------------------------------------	--------	--------------

Product datasheet

4008321325846	Emergency Lighting 8 W/840	Shipping carton box 25 Pieces Sleeves	316 mm x 115 mm x 109 mm	3.96 dm ³	976.00 g
---------------	-------------------------------	--	-----------------------------	----------------------	----------

The mentioned product code describes the smallest quantity unit which can be ordered. One shipping unit can contain one or more single products. When placing an order, for the quantity please enter single or multiples of a shipping unit.

References / Links

For more information on QUICKTRONIC electronic control gear go to

▶ www.osram.com/QUICKTRONIC

Disclaimer

Subject to change without notice. Errors and omission excepted. Always make sure to use the most recent release.

OSRAM is distribution partner
of LEDVANCE of LAMPS

OSRAM

OSRAM GmbH
Marcel-Breuer-Strasse 6
80807 Munich, Germany