

---

# Product datasheet

## HQI-E 250 W/D PRO

POWERSTAR HQI-E coated | Metal halide lamps with quartz technology for enclosed luminaires



## Technical data

### Electrical data

Nominal wattage	250.00 W
Rated wattage	250.00 W
Lamp current	3.0 A
PFC capacitor at 50 Hz	32 $\mu$ F <sup>1)</sup>
Nominal voltage	105 V
Ignition voltage	4.0 kVp;5.0 kVp <sup>2)</sup>
Nominal current	3 A

<sup>1)</sup> At rated voltage and  $\cos \varphi \geq 0.9$

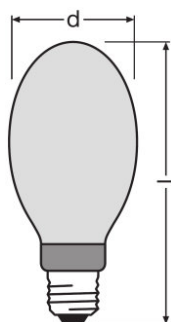
<sup>2)</sup> Minimum;Maximum

### Photometrical data

Rated lamp efficacy (standard condition)	72 lm/W
Rated luminous flux	18000 lm
Color rendering index Ra	90
Color temperature	5500 K
Light color	955
Rated LLMF at 2,000 h	0.92
Rated LLMF at 4,000 h	0.90
Rated LLMF at 6,000 h	0.87
Rated LLMF at 8,000 h	0.85
Rated LLMF at 12,000 h	0.81
UV protection	Yes
Nominal luminous flux	18000 lm
Rated color temperature	5500 K
Luminous flux	18000 lm

### Dimensions & weight

---



Diameter	90.0 mm
Length	226.0 mm
Product weight	170.00 g
Outer bulb	E90
Overall length	226.0 mm

### Temperatures & operating conditions

Maximum permitted outer bulb temperature	400 °C
Maximum permitted base edge temperature	250 °C

### Lifespan

Rated lamp survival factor at 2,000 h	0.96
Rated lamp survival factor at 4,000 h	0.94
Rated lamp survival factor at 6,000 h	0.93
Rated lamp survival factor at 8,000 h	0.88
Rated lamp survival factor at 12,000 h	0.81
Lifespan B50	16000 h

### Additional product data

Base (standard designation)	E40
Design / version	Coated
Mercury content	20.0 mg
Appropriate disposal acc. to WEEE	Yes
Mercury-free	No

### Capabilities

Dimmable	No
----------	----

## Product datasheet

<b>Burning position</b>	Any <sup>1)</sup>
<b>Enclosed luminaire required</b>	Yes

<sup>1)</sup> Color shifts possible in base-down burning position

### Certificates & standards

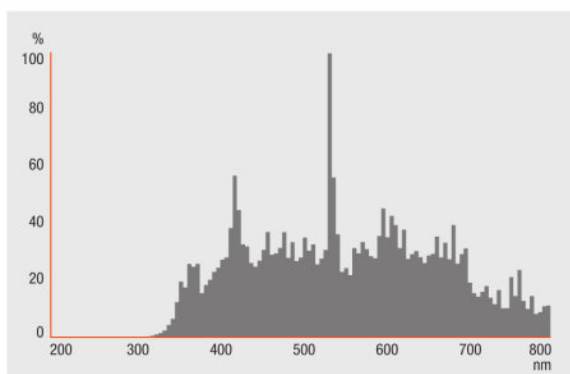
<b>Energy efficiency class</b>	A
<b>Energy consumption</b>	275 kWh/1000h

### Country specific categorizations

<b>ILCOS</b>	ME/UB-250/952-H/E/SL-E40-91/226
<b>Order reference</b>	HQI-E 250W/D PR

### Light Distribution

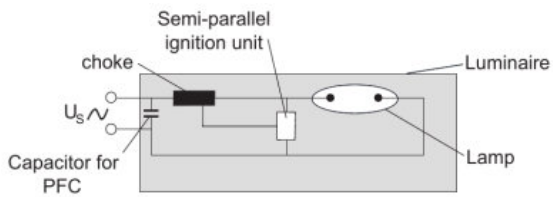
---



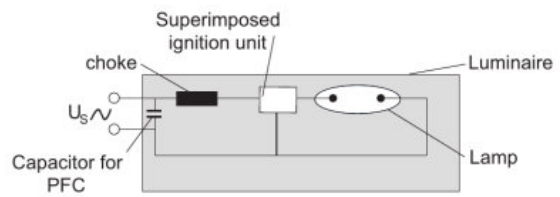
---

HQI\_T\_D\_PRO

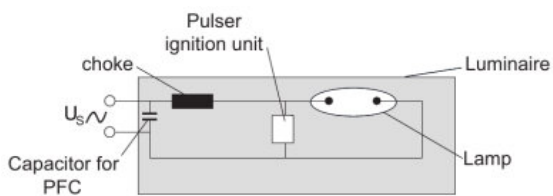
## Product datasheet



OPERATION OF HIGH INTENSITY DISCHARGE LAMPS WITH SEMI-PARALLEL IGNITION UNIT



OPERATION OF HIGH INTENSITY DISCHARGE LAMPS WITH A SUPERIMPOSED IGNITION UNIT



OPERATION OF HIGH INTENSITY DISCHARGE LAMPS WITH PULSE IGNITION UNIT

### Logistical Data

Product code	Product description	Packaging unit (Pieces/Unit)	Dimensions (length x width x height)	Volume	Gross weight
4008321677907	HQI-E 250 W/D PRO	Shipping carton box 12 Pieces Round wrap	426 mm x 252 mm x 331 mm	35.53 dm <sup>3</sup>	2879.00 g

The mentioned product code describes the smallest quantity unit which can be ordered. One shipping unit can contain one or more single products. When placing an order, for the quantity please enter single or multiples of a shipping unit.

### Disclaimer

Subject to change without notice. Errors and omission excepted. Always make sure to use the most recent release.

OSRAM is distribution partner  
of LEDVANCE of LAMPS

**OSRAM**

OSRAM GmbH  
Marcel-Breuer-Strasse 6  
80807 Munich, Germany

---

## HQI-E 250 W/D PRO

POWERSTAR HQI-E coated | Metal halide lamps with quartz technology for enclosed luminaires

Product name	Product name ECG	EAN
HQI-E 250 W/D PRO	PTo 250/220-240 3DIM	4008321863669