

---

# Product datasheet

## FC 22 W/840

LUMILUX T5 FC | Circular fluorescent lamps 16 mm, with 2GX13 base

- Public buildings Offices Restaurants Industry Shops  
Supermarkets and department stores Hotels



- Extremely economical Good quality of light Excellent luminous flux Excellent uniform illumination with no shadows  
Good average life (with OSRAM ECG)



# Product datasheet

## Technical data

### Electrical data

Nominal wattage	22.00 W
Rated wattage	22.30 W

### Photometrical data

Rated lamp efficacy (standard condition)	81 lm/W
Color rendering index Ra	≥80
Rated luminous flux	1800 lm
Luminous flux at	1900 lm
Light color	840
Rated color temperature	4000 K
Nominal luminous flux	1900 lm
Light color (designation)	LUMILUX Cool White
Rated LLMF at 2,000 h	0.85
Rated LLMF at 4,000 h	0.83
Rated LLMF at 6,000 h	0.80
Rated LLMF at 8,000 h	0.80
Rated LLMF at 12,000 h	0.75
Color temperature	4000 K
Luminous flux	1900 lm

### Dimensions & weight



Tube diameter	16 mm
Length	230.0 mm
Length with base excl. base pins/connection	225.00 mm
Diameter	16.0 mm
Product weight	62.50 g

## Product datasheet

Outer bulb	T16
Maximum diameter	16.0 mm

### Temperatures & operating conditions

Rated ambient temp.w.max.luminous flux	35.0 °C
--	---------

### Lifespan

Service life	8000 h <sup>1)</sup>
Lifespan	12000 h <sup>1)</sup>
Rated lamp survival factor at 2,000 h	0.99
Rated lamp survival factor at 4,000 h	0.99
Rated lamp survival factor at 6,000 h	0.98
Rated lamp survival factor at 8,000 h	0.92
Rated lamp survival factor at 12,000 h	0.50
Operation mode LLMF/LSF	HF
Rated lamp life time	12000 h

<sup>1)</sup> With preheat ECG

### Additional product data

Base (standard designation)	2GX13
Mercury content	3.0 mg
Product remark	Suitable for ECG operation only
Appropriate disposal acc. to WEEE	Yes

### Capabilities

Suitable for indoor	Yes
---------------------	-----

### Certificates & standards

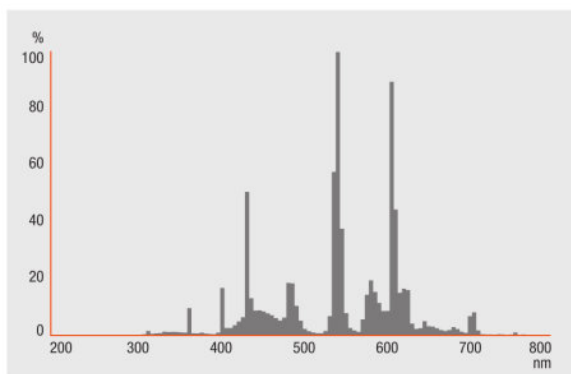
Energy efficiency class	A
Energy consumption	25 kWh/1000h

### Country specific categorizations

Order reference	FC 22W/840
-----------------	------------

### Light Distribution

---



---

FL\_840

---

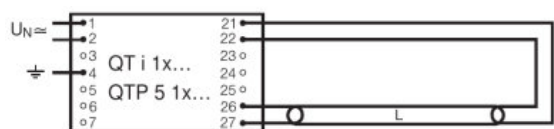
### System guarantee

OSRAM System+ Guarantee in combination with OSRAM ECGs

---

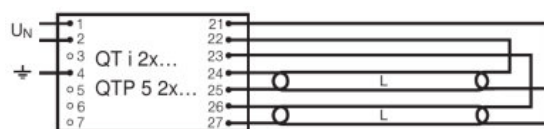
### Equipment / Accessories

- Exclusively for operation on electronic control gears



---

QUICKTRONIC INTELLIGENT QT i 1x QTP 5 1x



---

QUICKTRONIC INTELLIGENT QT i 2x QTP 5 2x

## Product datasheet

### Logistical Data

Product code	Product description	Packaging unit (Pieces/Unit)	Dimensions (length x width x height)	Volume	Gross weight
4050300528465	FC 22 W/840	Shipping carton box 12 Pieces Folding carton box	375 mm x 245 mm x 253 mm	23.24 dm <sup>3</sup>	1865.00 g

The mentioned product code describes the smallest quantity unit which can be ordered. One shipping unit can contain one or more single products. When placing an order, for the quantity please enter single or multiples of a shipping unit.

### References / Links

For more information on the system guarantee and the terms and conditions of the guarantee visit

▶ [www.osram.com/system-guarantee](http://www.osram.com/system-guarantee)

For more information on QUICKTRONIC electronic control gear go to

▶ [www.osram.com/QUICKTRONIC](http://www.osram.com/QUICKTRONIC)

### Disclaimer

Subject to change without notice. Errors and omission excepted. Always make sure to use the most recent release.

OSRAM is distribution partner  
of LEDVANCE of LAMPS

**OSRAM**

OSRAM GmbH  
Marcel-Breuer-Strasse 6  
80807 Munich, Germany

## FC 22 W/840

LUMILUX T5 FC | Circular fluorescent lamps 16 mm, with 2GX13 base

Product name	Product name ECG	EAN	Nominal current	Nominal wattage + Power loss	Power factor $\lambda$ [PIM]	Luminous flux at 35 °C
FC 22 W/840	QT-ECO 1x18-24/220-240 S	4050300638560	0.16 A	22.50 W	0.60 c	1650 lm
	QTi 1x14/24/21/39 GII	4008321383334	0.15 A	25.00 W	0.94 c	1800 lm
	QTi 1x14/24 DIM	4050300870922	0.11 A	25.00 W	0.98	1750 lm
	QTi 2x14/24/21/39 GII	4008321383396	0.21 A	49.00 W	0.96	1800 lm
	QTi 2x14/24 DIM	4050300870946	0.22 A	49.00 W	0.98	1750 lm
	QTi 3x14/24 DIM	4008321069719	0.32 A	73.00 W	0.99	1750 lm
	QTi 4x14/24 DIM	4008321069993	0.43 A	98.00 W	0.99	1750 lm
	QTi DALI 1x14/24 DIM	4050300870380	0.11 A	25.00 W	0.98	1750 lm
	QTi DALI 2x14/24 DIM	4050300870861	0.22 A	49.00 W	0.98	1750 lm
	QTi DALI 3x14/24 DIM	4008321069955	0.32 A	73.00 W	0.99	1750 lm
	QTi DALI 4x14/24 DIM	4008321070036	0.43 A	98.00 W	0.99	1750 lm
	QTi DALI-T/E 1x18-57 DIM	4008321060808	0.12 A	26.00 W	0.96	1800 lm
	QTi DALI-T/E 2x18-42 DIM	4008321060822	0.22 A	51.00 W	0.97	1800 lm
	QTi-T/E 1x18-57 DIM	4008321060860	0.12 A	26.00 W	0.96	1750 lm
	QTi-T/E 2x18-42 DIM	4008321060846	0.22 A	51.00 W	0.97	1750 lm
	QT-M 2x26-42/220-240 S	4008321110022	0.36 A	54.00 W	0.97	1600 lm
	QTP-M 1x26-42	4008321329134	0.12 A	25.00 W	0.94 c	1800 lm

## Product datasheet

Product name	Product name ECG	EAN	Nominal current	Nominal wattage + Power loss	Power factor $\lambda$ [PIM]	Luminous flux at 35 °C
	QTP-M 2x26-32	4008321329158	0.22 A	49.00 W	0.97	1800 lm

Product name	Product name ECG	EAN	Number of lighting outlets	Luminous flux at 25 °C
FC 22 W/840	QT-ECO 1x18-24/220-240 S	4050300638560	1	
	QTi 1x14/24/21/39 GII	4008321383334	1	
	QTi 1x14/24 DIM	4050300870922	1	
	QTi 2x14/24/21/39 GII	4008321383396	2	
	QTi 2x14/24 DIM	4050300870946	2	
	QTi 3x14/24 DIM	4008321069719	3	
	QTi 4x14/24 DIM	4008321069993	4	
	QTi DALI 1x14/24 DIM	4050300870380	1	
	QTi DALI 2x14/24 DIM	4050300870861	2	
	QTi DALI 3x14/24 DIM	4008321069955	3	
	QTi DALI 4x14/24 DIM	4008321070036	4	
	QTi DALI-T/E 1x18-57 DIM	4008321060808	1	
	QTi DALI-T/E 2x18-42 DIM	4008321060822	2	
	QTi-T/E 1x18-57 DIM	4008321060860	1	
	QTi-T/E 2x18-42 DIM	4008321060846	2	
	QT-M 2x26-42/220-240 S	4008321110022	2	1600 lm
	QTP-M 1x26-42	4008321329134	1	
	QTP-M 2x26-32	4008321329158	2	