
Product datasheet

FC 55 W/830

LUMILUX T5 FC | Circular fluorescent lamps 16 mm, with 2GX13 base

- Public buildings Offices Restaurants Industry Shops
Supermarkets and department stores Hotels



- Extremely economical Good quality of light Excellent luminous flux Excellent uniform illumination with no shadows
Good average life (with OSRAM ECG)



Product datasheet

Technical data

Electrical data

| | |
|-----------------|---------|
| Nominal wattage | 55.00 W |
| Rated wattage | 55.00 W |

Photometrical data

| | |
|--|--------------------|
| Rated lamp efficacy (standard condition) | 76 lm/W |
| Color rendering index Ra | ≥80 |
| Rated luminous flux | 4200 lm |
| Luminous flux at | 4200 lm |
| Light color | 830 |
| Rated color temperature | 3000 K |
| Nominal luminous flux | 4200 lm |
| Light color (designation) | LUMILUX Warm White |
| Rated LLMF at 2,000 h | 0.85 |
| Rated LLMF at 4,000 h | 0.83 |
| Rated LLMF at 6,000 h | 0.80 |
| Rated LLMF at 8,000 h | 0.80 |
| Rated LLMF at 12,000 h | 0.75 |
| Color temperature | 3000 K |
| Luminous flux | 4200 lm |

Dimensions & weight



| | |
|---|-----------|
| Tube diameter | 16 mm |
| Length | 305.0 mm |
| Length with base excl. base pins/connection | 300.00 mm |
| Diameter | 16.0 mm |
| Product weight | 83.75 g |

Product datasheet

| | |
|------------------|---------|
| Outer bulb | T16 |
| Maximum diameter | 16.0 mm |

Temperatures & operating conditions

| | |
|--|---------|
| Rated ambient temp.w.max.luminous flux | 35.0 °C |
|--|---------|

Lifespan

| | |
|--|-----------------------|
| Service life | 8000 h ¹⁾ |
| Lifespan | 12000 h ¹⁾ |
| Rated lamp survival factor at 2,000 h | 0.99 |
| Rated lamp survival factor at 4,000 h | 0.99 |
| Rated lamp survival factor at 6,000 h | 0.98 |
| Rated lamp survival factor at 8,000 h | 0.92 |
| Rated lamp survival factor at 12,000 h | 0.50 |
| Operation mode LLMF/LSF | HF |
| Rated lamp life time | 12000 h |

¹⁾ With preheat ECG

Additional product data

| | |
|-----------------------------------|---------------------------------|
| Base (standard designation) | 2GX13 |
| Mercury content | 3.0 mg |
| Product remark | Suitable for ECG operation only |
| Appropriate disposal acc. to WEEE | Yes |

Capabilities

| | |
|---------------------|-----|
| Suitable for indoor | Yes |
|---------------------|-----|

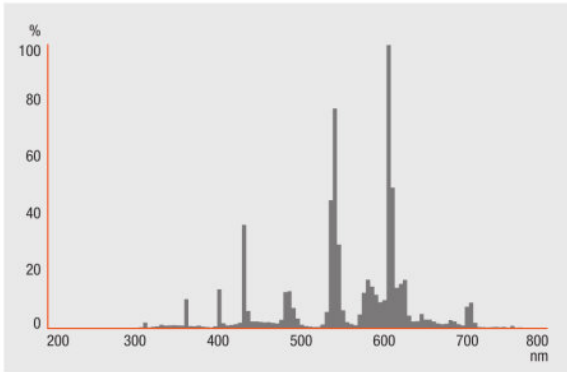
Certificates & standards

| | |
|-------------------------|--------------|
| Energy efficiency class | A |
| Energy consumption | 61 kWh/1000h |

Country specific categorizations

| | |
|-----------------|------------|
| Order reference | FC 55W/830 |
|-----------------|------------|

Light Distribution



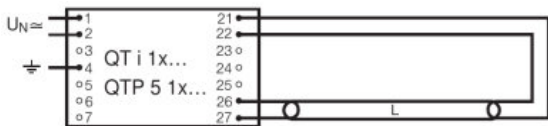
FL_830

System guarantee

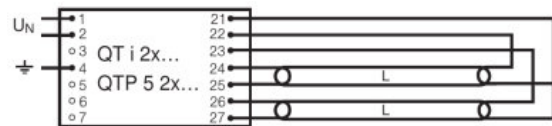
OSRAM System+ Guarantee in combination with OSRAM ECGs

Equipment / Accessories

- Exclusively for operation on electronic control gears



QUICKTRONIC INTELLIGENT QT i 1x QTP 5 1x



QUICKTRONIC INTELLIGENT QT i 2x QTP 5 2x

Product datasheet

Logistical Data

| Product code | Product description | Packaging unit (Pieces/Unit) | Dimensions (length x width x height) | Volume | Gross weight |
|---------------|---------------------|--|--------------------------------------|-----------------------|--------------|
| 4050300528601 | FC 55 W/830 | Shipping carton box 12 Pieces Folding carton box | 375 mm x 320 mm x 328 mm | 39.36 dm ³ | 2787.00 g |

The mentioned product code describes the smallest quantity unit which can be ordered. One shipping unit can contain one or more single products. When placing an order, for the quantity please enter single or multiples of a shipping unit.

References / Links

For more information on the system guarantee and the terms and conditions of the guarantee visit

▶ www.osram.com/system-guarantee

For more information on QUICKTRONIC electronic control gear go to

▶ www.osram.com/QUICKTRONIC

Disclaimer

Subject to change without notice. Errors and omission excepted. Always make sure to use the most recent release.

OSRAM is distribution partner
of LEDVANCE of LAMPS

OSRAM

OSRAM GmbH
Marcel-Breuer-Strasse 6
80807 Munich, Germany

FC 55 W/830

LUMILUX T5 FC | Circular fluorescent lamps 16 mm, with 2GX13 base

| Product name | Product name ECG | EAN | Nominal current | Nominal wattage + Power loss | Power factor λ [PIM] | Luminous flux at 35 °C |
|--------------|----------------------|---------------|-----------------|------------------------------|------------------------------|------------------------|
| FC 55 W/830 | QTi 1x28/54 DIM | 4050300870588 | 0.26 A | 59.00 W | 0.99 | 4450 lm |
| | QTi 1x35/49/80 GII | 4008321383372 | 0.26 A | 59.00 W | 0.99 | 4200 lm |
| | QTi 2x28/54 DIM | 4050300870717 | 0.51 A | 115.00 W | 0.99 | 4450 lm |
| | QTi 2x35/49/80 GII | 4008321658951 | 0.53 A | 119.00 W | 0.98 | 4200 lm |
| | QTi DALI 1x28/54 DIM | 4050300870809 | 0.26 A | 59.00 W | 0.99 | 4450 lm |
| | QTi DALI 2x28/54 DIM | 4050300870502 | 0.51 A | 115.00 W | 0.99 | 4450 lm |
| | QTP-FC 1x55 | 4008321537041 | 0.26 A | 59.00 W | 0.98 | 4200 lm |

| Product name | Product name ECG | EAN | Number of lighting outlets |
|--------------|----------------------|---------------|----------------------------|
| FC 55 W/830 | QTi 1x28/54 DIM | 4050300870588 | 1 |
| | QTi 1x35/49/80 GII | 4008321383372 | 1 |
| | QTi 2x28/54 DIM | 4050300870717 | 2 |
| | QTi 2x35/49/80 GII | 4008321658951 | 2 |
| | QTi DALI 1x28/54 DIM | 4050300870809 | 1 |
| | QTi DALI 2x28/54 DIM | 4050300870502 | 2 |
| | QTP-FC 1x55 | 4008321537041 | 1 |