
Product datasheet

HE 28 W/830

LUMILUX T5 HE | Tubular fluorescent lamps 16 mm, high efficiency, with G5 base



- Public buildings Offices Shops Supermarkets and department stores Industry Outdoor applications only in suitable luminaires

- Good economy and efficiency Up to 20 % more economical than LUMILUX T8 Up to 50 % smaller volume than comparable T8 lamps



Technical data

Electrical data

Nominal voltage	220 V
Nominal wattage	28.00 W
Rated lamp efficacy (HF data 25 °C)	93 lm/W
Rated wattage	27.90 W

Photometrical data

Color rendering index Ra	≥80
Rated luminous flux	2600 lm
Luminous flux at	2600 lm
Luminous flux at	2900 lm
Light color	830
Rated color temperature	3000 K
Nominal luminous flux	2600 lm
Light color (designation)	LUMILUX Warm White
Rated LLMF at 2,000 h	0.95
Rated LLMF at 4,000 h	0.93
Rated LLMF at 6,000 h	0.92
Rated LLMF at 8,000 h	0.90
Rated LLMF at 12,000 h	0.90
Rated LLMF at 16,000 h	0.90
Rated LLMF at 20,000 h	0.89
Color temperature	3000 K
Luminous flux	2600 lm

Dimensions & weight



Tube diameter	16 mm
---------------	-------

Product datasheet

Length	1149 mm
Length with base excl. base pins/connection	1149.00 mm
Diameter	16.0 mm
Product weight	90.00 g
Outer bulb	T16
Maximum diameter	16.0 mm

Temperatures & operating conditions

Rated ambient temp.w.max.luminous flux	35.0 °C
--	---------

Lifespan

Service life	19000 h ¹⁾
Rated lamp survival factor at 2,000 h	0.99
Rated lamp survival factor at 4,000 h	0.99
Rated lamp survival factor at 6,000 h	0.99
Rated lamp survival factor at 8,000 h	0.99
Rated lamp survival factor at 12,000 h	0.99
Rated lamp survival factor at 16,000 h	0.97
Rated lamp survival factor at 20,000 h	0.85
Operation mode LLMF/LSF	HF
Rated lamp life time	24000 h

¹⁾ With preheat ECG

Additional product data

Base (standard designation)	G5
Mercury content	1.5 mg
Product remark	Suitable for ECG operation only/Lamp designed for internal luminaire temperatures of 30...40 °C; optimum luminous flux achieved at 35 °C
Appropriate disposal acc. to WEEE	Yes

Capabilities

Dimmable	Yes
Suitable for indoor	Yes

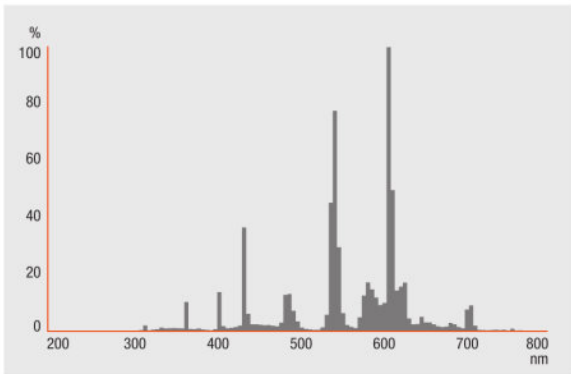
Certificates & standards

Energy efficiency class	A+
Energy consumption	31 kWh/1000h

Country specific categorizations

Order reference	HE 28W/830
-----------------	------------

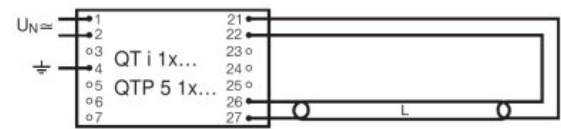
Light Distribution



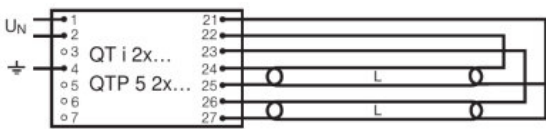
FL_830

System guarantee

OSRAM System+ Guarantee in combination with OSRAM ECGs



QUICKTRONIC INTELLIGENT QT i 1x QTP 5 1x



QUICKTRONIC INTELLIGENT QT i 2x QTP 5 2x

Logistical Data

Product datasheet

Product code	Product description	Packaging unit (Pieces/Unit)	Dimensions (length x width x height)	Volume	Gross weight
4050300464787	HE 28 W/830	Shipping carton box 40 Pieces Sleeves	1200 mm x 94 mm x 194 mm	21.88 dm ³	4813.00 g
4050300591483	HE 28 W/830	Shipping carton box 20 Pieces Sleeves	1182 mm x 83 mm x 104 mm	10.20 dm ³	2712.50 g

The mentioned product code describes the smallest quantity unit which can be ordered. One shipping unit can contain one or more single products. When placing an order, for the quantity please enter single or multiples of a shipping unit.

References / Links

For more information on the system guarantee and the terms and conditions of the guarantee visit

► www.osram.com/system-guarantee

Disclaimer

Subject to change without notice. Errors and omission excepted. Always make sure to use the most recent release.

OSRAM is distribution partner
of LEDVANCE of LAMPS

OSRAM

OSRAM GmbH
Marcel-Breuer-Strasse 6
80807 Munich, Germany

HE 28 W/830

LUMILUX T5 HE | Tubular fluorescent lamps 16 mm, high efficiency, with G5 base

Product name	Product name ECG	EAN	Nominal current	Nominal wattage + Power loss	Power factor λ [PIM]	Luminous flux at 35 °C
HE 28 W/830	QT-FIT 5 1x14-35	4008321971234	0.14 A	31.00 W	0.96	2600 lm
	QT-FIT 5 2x14-35	4008321971258	0.26 A	63.00 W	0.98	2600 lm
	QTi 1x14/24/21/39 GII	4008321383334	0.15 A	33.00 W	0.99	2700 lm
	QTi 1x28/54/35/49 GII	4008321383358	0.15 A	32.00 W	0.95	2600 lm
	QTi 1x28/54 DIM	4050300870588	0.14 A	30.10 W	0.97	2600 lm
	QTi 1x35/49/80 GII	4008321383372	0.15 A	33.00 W	0.99	2700 lm
	QTi 2x14/24/21/39 GII	4008321383396	0.29 A	63.00 W	0.99	2650 lm
	QTi 2x28/54/35/49 GII	4008321383419	0.28 A	61.00 W	0.96	2600 lm
	QTi 2x28/54 DIM	4050300870717	0.27 A	60.20 W	0.97	2600 lm
	QTi 2x35/49/80 GII	4008321658951	0.30 A	63.00 W	0.97	2650 lm
	QTi DALI 1x28/54 DIM	4050300870809	0.14 A	30.10 W	0.97	2600 lm
	QTi DALI 2x28/54 DIM	4050300870502	0.27 A	60.20 W	0.97	2600 lm
	QTP5 1x14-35	4008321329035	0.14 A	31.00 W	0.96	2600 lm
	QTP5 2x14-35	4008321329073	0.26 A	60.00 W	0.98	2600 lm

Product name	Product name ECG	EAN	Number of lighting outlets
HE 28 W/830	QT-FIT 5 1x14-35	4008321971234	1

Product datasheet

Product name	Product name ECG	EAN	Number of lighting outlets
	QT-FIT 5 2x14-35	4008321971258	2
	QTi 1x14/24/21/39 GII	4008321383334	1
	QTi 1x28/54/35/49 GII	4008321383358	1
	QTi 1x28/54 DIM	4050300870588	1
	QTi 1x35/49/80 GII	4008321383372	1
	QTi 2x14/24/21/39 GII	4008321383396	2
	QTi 2x28/54/35/49 GII	4008321383419	2
	QTi 2x28/54 DIM	4050300870717	2
	QTi 2x35/49/80 GII	4008321658951	2
	QTi DALI 1x28/54 DIM	4050300870809	1
	QTi DALI 2x28/54 DIM	4050300870502	2
	QTP5 1x14-35	4008321329035	1
	QTP5 2x14-35	4008321329073	2