

Product datasheet

HO 24 W/840

LUMILUX T5 HO | Tubular fluorescent lamps 16 mm, high output, with G5 base

- Industry Public buildings Offices Tunnels, underpasses
Car parks Outdoor applications only in suitable luminaires



- Excellent luminous flux Up to 20 % more economical than LUMILUX T8 Up to 50 % smaller volume than comparable T8 lamps



Technical data

Electrical data

Nominal voltage	77 V
Nominal wattage	24.00 W
Rated lamp efficacy (HF data 25 °C)	73 lm/W
Rated wattage	22.50 W

Photometrical data

Color rendering index Ra	≥80
Rated luminous flux	1750 lm
Luminous flux at	1750 lm
Luminous flux at	2000 lm
Light color	840
Rated color temperature	4000 K
Nominal luminous flux	1750 lm
Light color (designation)	LUMILUX Cool White
Rated LLMF at 2,000 h	0.95
Rated LLMF at 4,000 h	0.93
Rated LLMF at 6,000 h	0.92
Rated LLMF at 8,000 h	0.90
Rated LLMF at 12,000 h	0.90
Rated LLMF at 16,000 h	0.90
Rated LLMF at 20,000 h	0.89
Color temperature	4000 K
Luminous flux	1750 lm

Dimensions & weight



Tube diameter	16 mm
---------------	-------

Product datasheet

Length	549.0 mm
Length with base excl. base pins/connection	549.00 mm
Diameter	16.0 mm
Product weight	47.00 g
Outer bulb	T16
Maximum diameter	16.0 mm

Temperatures & operating conditions

Rated ambient temp.w.max.luminous flux	35.0 °C
--	---------

Lifespan

Service life	19000 h ¹⁾
Lifespan	24000 h ¹⁾
Rated lamp survival factor at 2,000 h	0.99
Rated lamp survival factor at 4,000 h	0.99
Rated lamp survival factor at 6,000 h	0.99
Rated lamp survival factor at 8,000 h	0.99
Rated lamp survival factor at 12,000 h	0.99
Rated lamp survival factor at 16,000 h	0.97
Rated lamp survival factor at 20,000 h	0.85
Operation mode LLMF/LSF	HF
Rated lamp life time	24000 h

¹⁾ With preheat ECG

Additional product data

Base (standard designation)	G5
Mercury content	1.7 mg
Product remark	Suitable for ECG operation only/Lamp designed for internal luminaire temperatures of 30...40 °C; optimum luminous flux achieved at 35 °C
Appropriate disposal acc. to WEEE	Yes

Capabilities

Dimmable	Yes
Suitable for indoor	Yes

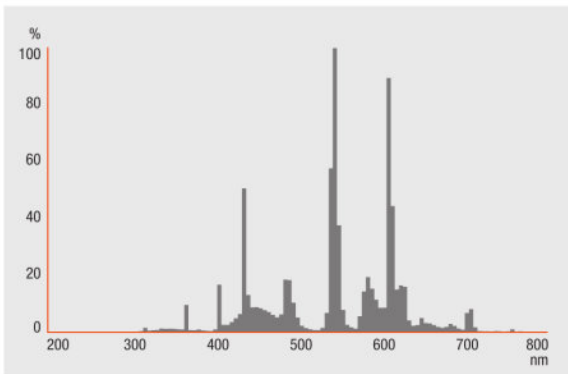
Certificates & standards

Energy efficiency class	A
Energy consumption	25 kWh/1000h

Country specific categorizations

Order reference	HO 24W/840
-----------------	------------

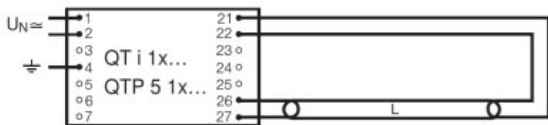
Light Distribution



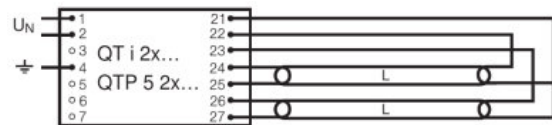
FL_840

System guarantee

OSRAM System+ Guarantee in combination with OSRAM ECGs



QUICKTRONIC INTELLIGENT QT i 1x QTP 5 1x



QUICKTRONIC INTELLIGENT QT i 2x QTP 5 2x

Product datasheet

Logistical Data

Product code	Product description	Packaging unit (Pieces/Unit)	Dimensions (length x width x height)	Volume	Gross weight
4050300453477	HO 24 W/840	Shipping carton box 40 Pieces Sleeves	600 mm x 83 mm x 194 mm	9.66 dm ³	2409.00 g
4050300591643	HO 24 W/840	Shipping carton box 20 Pieces Sleeves	582 mm x 83 mm x 104 mm	5.02 dm ³	1351.00 g

The mentioned product code describes the smallest quantity unit which can be ordered. One shipping unit can contain one or more single products. When placing an order, for the quantity please enter single or multiples of a shipping unit.

References / Links

For more information on the system guarantee and the terms and conditions of the guarantee visit

▶ www.osram.com/system-guarantee

Disclaimer

Subject to change without notice. Errors and omission excepted. Always make sure to use the most recent release.

OSRAM is distribution partner
of LEDVANCE of LAMPS

OSRAM

OSRAM GmbH
Marcel-Breuer-Strasse 6
80807 Munich, Germany

HO 24 W/840

LUMILUX T5 HO | Tubular fluorescent lamps 16 mm, high output, with G5 base

Product name	Product name ECG	EAN	Nominal current	Nominal wattage + Power loss	Power factor λ [PIM]	Luminous flux at 35 °C
HO 24 W/840	QT-ECO 1x18-24/220-240 S	4050300638560	0.15 A	20.00 W	0.60 c	1600 lm
	QT-FIT 5/8 1x18-39	4008321873927	0.13 A	28.00 W	0.98	1750 lm
	QT-FIT 5/8 2x18-39	4008321873903	0.24 A	53.00 W	0.98	1750 lm
	QTi 1x14/24/21/39 GII	4008321383334	0.12 A	26.00 W	0.96	1750 lm
	QTi 1x14/24 DIM	4050300870922	0.11 A	26.00 W	0.98	1750 lm
	QTi 2x14/24/21/39 GII	4008321383396	0.23 A	50.00 W	0.96	1750 lm
	QTi 2x14/24 DIM	4050300870946	0.22 A	50.00 W	0.96	1750 lm
	QTi 3x14/24 DIM	4008321069719	0.32 A	74.00 W	0.99	1750 lm
	QTi 4x14/24 DIM	4008321069993	0.43 A	98.00 W	0.99	1750 lm
	QTi DALI 1x14/24 DIM	4050300870380	0.11 A	25.30 W	0.98	1750 lm
	QTi DALI 2x14/24 DIM	4050300870861	0.22 A	49.30 W	0.98	1750 lm
	QTi DALI 3x14/24 DIM	4008321069955	0.32 A	73.40 W	0.99	1750 lm
	QTi DALI 4x14/24 DIM	4008321070036	0.43 A	97.60 W	0.99	1750 lm
	QT-M 2x26-42/220-240 S	4008321110022	0.23 A	54.00 W	0.97	1750 lm
	QTP-M 1x26-42	4008321329134	0.12 A	25.00 W	0.95	1750 lm
	QTP-M 2x26-32	4008321329158	0.23 A	49.00 W	0.97	1750 lm
	QTP-OPTIMAL 1x18-40	4008321873743	0.13 A	28.00 W	0.98	1750 lm

Product datasheet

Product name	Product name ECG	EAN	Nominal current	Nominal wattage + Power loss	Power factor λ [PIM]	Luminous flux at 35 °C
	QTP-OPTIMAL 2x18-40	4008321873767	0.24 A	49.20 W	0.98	1750 lm

Product name	Product name ECG	EAN	Number of lighting outlets
HO 24 W/840	QT-ECO 1x18-24/220-240 S	4050300638560	1
	QT-FIT 5/8 1x18-39	4008321873927	1
	QT-FIT 5/8 2x18-39	4008321873903	2
	QTi 1x14/24/21/39 GII	4008321383334	1
	QTi 1x14/24 DIM	4050300870922	1
	QTi 2x14/24/21/39 GII	4008321383396	2
	QTi 2x14/24 DIM	4050300870946	2
	QTi 3x14/24 DIM	4008321069719	3
	QTi 4x14/24 DIM	4008321069993	4
	QTi DALI 1x14/24 DIM	4050300870380	1
	QTi DALI 2x14/24 DIM	4050300870861	2
	QTi DALI 3x14/24 DIM	4008321069955	3
	QTi DALI 4x14/24 DIM	4008321070036	4
	QT-M 2x26-42/220-240 S	4008321110022	2
	QTP-M 1x26-42	4008321329134	1
	QTP-M 2x26-32	4008321329158	2
	QTP-OPTIMAL 1x18-40	4008321873743	1
	QTP-OPTIMAL 2x18-40	4008321873767	2