

Product datasheet

HO 39 W/830

LUMILUX T5 HO | Tubular fluorescent lamps 16 mm, high output, with G5 base

- Industry Public buildings Offices Tunnels, underpasses
Car parks Outdoor applications only in suitable luminaires



- Excellent luminous flux Up to 20 % more economical than LUMILUX T8 Up to 50 % smaller volume than comparable T8 lamps



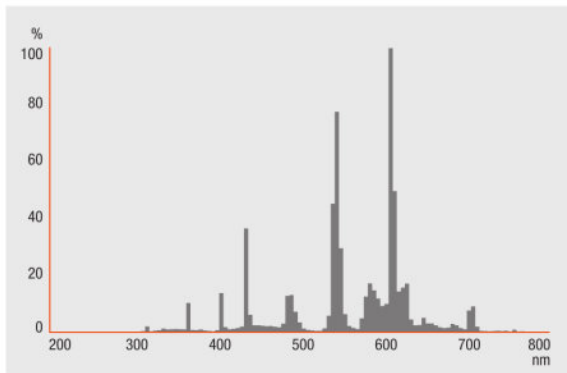
Product datasheet

Technical data

Additional product data

Appropriate disposal acc. to WEEE	Yes
-----------------------------------	-----

Light Distribution

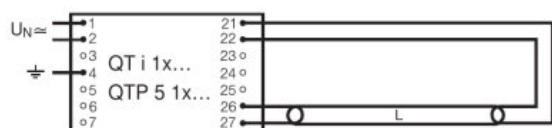


FL_830

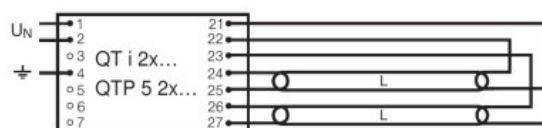
System guarantee

OSRAM System+ Guarantee in combination with OSRAM ECGs

Product datasheet



QUICKTRONIC INTELLIGENT QT i 1x QTP 5 1x



QUICKTRONIC INTELLIGENT QT i 2x QTP 5 2x

References / Links

For more information on the system guarantee and the terms and conditions of the guarantee visit

▶ www.osram.com/system-guarantee

Disclaimer

Subject to change without notice. Errors and omission excepted. Always make sure to use the most recent release.

OSRAM is distribution partner
of LEDVANCE of LAMPS

OSRAM

OSRAM GmbH
Marcel-Breuer-Strasse 6
80807 Munich, Germany

HO 39 W/830

LUMILUX T5 HO | Tubular fluorescent lamps 16 mm, high output, with G5 base

Product name	Product name ECG	EAN	Nominal current	Nominal wattage + Power loss	Power factor λ [PIM]	Luminous flux at 35 °C
HO 39 W/830	QT-FIT 5/8 1x18-39	4008321873927	0.19 A	42.00 W	0.98	3100 lm
	QT-FIT 5/8 2x18-39	4008321873903	0.36 A	80.00 W	0.98	3100 lm
	QTi 1x14/24/21/39 GII	4008321383334	0.18 A	41.00 W	0.98	3100 lm
	QTi 1x21/39 DIM	4050300870564	0.18 A	41.80 W	0.98	3100 lm
	QTi 2x14/24/21/39 GII	4008321383396	0.36 A	81.00 W	0.98	3100 lm
	QTi 2x21/39 DIM	4050300870694	0.36 A	82.00 W	0.96	3100 lm
	QTi DALI 1x21/39 DIM	4050300870366	0.18 A	41.80 W	0.98	3100 lm
	QTi DALI 2x21/39 DIM	4050300870489	0.36 A	82.00 W	0.98	3100 lm
	QTP-M 1x26-42	4008321329134	0.18 A	41.00 W	0.97	3100 lm
	QTP-OPTIMAL 1x18-40	4008321873743	0.13 A	41.00 W	0.98	3100 lm
QTP-OPTIMAL 2x18-40	4008321873767	0.24 A	82.90 W	0.99	3100 lm	

Product name	Product name ECG	EAN	Number of lighting outlets
HO 39 W/830	QT-FIT 5/8 1x18-39	4008321873927	1
	QT-FIT 5/8 2x18-39	4008321873903	2
	QTi 1x14/24/21/39 GII	4008321383334	1
	QTi 1x21/39 DIM	4050300870564	1

Product datasheet

Product name	Product name ECG	EAN	Number of lighting outlets
	QTi 2x14/24/21/39 GII	4008321383396	2
	QTi 2x21/39 DIM	4050300870694	2
	QTi DALI 1x21/39 DIM	4050300870366	1
	QTi DALI 2x21/39 DIM	4050300870489	2
	QTP-M 1x26-42	4008321329134	1
	QTP-OPTIMAL 1x18-40	4008321873743	1
	QTP-OPTIMAL 2x18-40	4008321873767	2