

Product datasheet

HO 49 W/830

LUMILUX T5 HO | Tubular fluorescent lamps 16 mm, high output, with G5 base

- Industry Public buildings Offices Tunnels, underpasses
Car parks Outdoor applications only in suitable luminaires



- Excellent luminous flux Up to 20 % more economical than LUMILUX T8 Up to 50 % smaller volume than comparable T8 lamps



Technical data

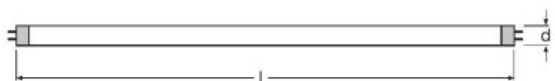
Electrical data

Nominal voltage	195 V
Nominal wattage	49.00 W
Rated lamp efficacy (HF data 25 °C)	88 lm/W
Rated wattage	49.00 W

Photometrical data

Color rendering index Ra	≥80
Rated luminous flux	4310 lm
Luminous flux at	4310 lm
Luminous flux at	4900 lm
Light color	830
Rated color temperature	3000 K
Nominal luminous flux	4310 lm
Light color (designation)	LUMILUX Warm White
Rated LLMF at 2,000 h	0.95
Rated LLMF at 4,000 h	0.93
Rated LLMF at 6,000 h	0.92
Rated LLMF at 8,000 h	0.90
Rated LLMF at 12,000 h	0.90
Rated LLMF at 16,000 h	0.90
Rated LLMF at 20,000 h	0.89
Color temperature	3000 K
Luminous flux	4310 lm

Dimensions & weight



Tube diameter	16 mm
---------------	-------

Product datasheet

Length	1449 mm
Length with base excl. base pins/connection	1449.00 mm
Diameter	16.0 mm
Product weight	115.00 g
Outer bulb	T16
Maximum diameter	16.0 mm

Temperatures & operating conditions

Rated ambient temp.w.max.luminous flux	35.0 °C
--	---------

Lifespan

Service life	19000 h ¹⁾
Lifespan	24000 h ¹⁾
Rated lamp survival factor at 2,000 h	0.99
Rated lamp survival factor at 4,000 h	0.99
Rated lamp survival factor at 6,000 h	0.99
Rated lamp survival factor at 8,000 h	0.99
Rated lamp survival factor at 12,000 h	0.99
Rated lamp survival factor at 16,000 h	0.97
Rated lamp survival factor at 20,000 h	0.85
Operation mode LLMF/LSF	HF
Rated lamp life time	24000 h

¹⁾ With preheat ECG

Additional product data

Base (standard designation)	G5
Mercury content	1.7 mg
Product remark	Suitable for ECG operation only/Lamp designed for internal luminaire temperatures of 30...40 °C; optimum luminous flux achieved at 35 °C
Appropriate disposal acc. to WEEE	Yes

Capabilities

Dimmable	Yes
Suitable for indoor	Yes

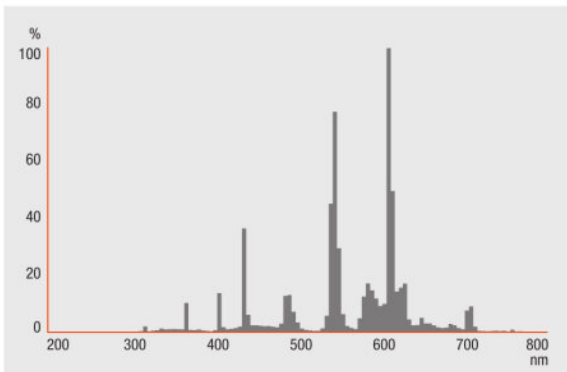
Certificates & standards

Energy efficiency class	A+
Energy consumption	55 kWh/1000h

Country specific categorizations

Order reference	HO 49W/830
-----------------	------------

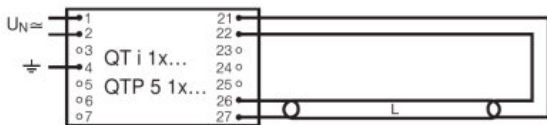
Light Distribution



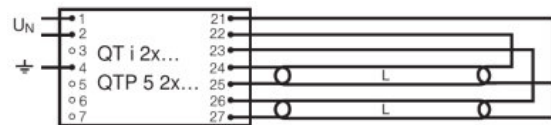
FL_830

System guarantee

OSRAM System+ Guarantee in combination with OSRAM ECGs



QUICKTRONIC INTELLIGENT QT i 1x QTP 5 1x



QUICKTRONIC INTELLIGENT QT i 2x QTP 5 2x

Product datasheet

Logistical Data

Product code	Product description	Packaging unit (Pieces/Unit)	Dimensions (length x width x height)	Volume	Gross weight
4050300657158	HO 49 W/830	Shipping carton box 40 Pieces Unpacked	1500 mm x 97 mm x 194 mm	28.23 dm ³	6090.00 g

The mentioned product code describes the smallest quantity unit which can be ordered. One shipping unit can contain one or more single products. When placing an order, for the quantity please enter single or multiples of a shipping unit.

References / Links

For more information on the system guarantee and the terms and conditions of the guarantee visit

▶ www.osram.com/system-guarantee

Disclaimer

Subject to change without notice. Errors and omission excepted. Always make sure to use the most recent release.

OSRAM is distribution partner
of LEDVANCE of LAMPS

OSRAM

OSRAM GmbH
Marcel-Breuer-Strasse 6
80807 Munich, Germany

HO 49 W/830

LUMILUX T5 HO | Tubular fluorescent lamps 16 mm, high output, with G5 base

Product name	Product name ECG	EAN	Nominal current	Nominal wattage + Power loss	Power factor λ [PIM]	Luminous flux at 35 °C
HO 49 W/830	QT-FIT 5 1x49	4008321832139	0.24 A	54.00 W	0.98	4300 lm
	QT-FIT 5 2x49	4008321832153	0.47 A	106.00 W	0.98	4300 lm
	QTi 1x28/54/35/49 GII	4008321383358	0.24 A	53.00 W	0.97	4300 lm
	QTi 1x35/49/80 DIM	4050300870540	0.24 A	53.40 W	0.98	4300 lm
	QTi 1x35/49/80 GII	4008321383372	0.24 A	53.00 W	0.97	4300 lm
	QTi 2x28/54/35/49 GII	4008321383419	0.46 A	105.00 W	0.98	4300 lm
	QTi 2x35/49/80 DIM	4050300870984	0.46 A	103.00 W	0.97	4300 lm
	QTi 2x35/49/80 GII	4008321658951	0.45 A	105.00 W	0.99	4300 lm
	QTi 2x35/49 DIM	4050300870670	0.45 A	103.60 W	0.97	4300 lm
	QTi DALI 1x35/49/80 DIM	4050300870342	0.24 A	53.40 W	0.98	4300 lm
	QTi DALI 2x35/49/80 DIM	4050300870441	0.46 A	101.00 W	0.99	4300 lm
	QTi DALI 2x35/49 DIM	4050300870403	0.45 A	103.60 W	0.99	4300 lm
	QTP5 1x49	4008321329370	0.24 A	53.00 W	0.95	
	QTP5 1x49	4008321329370	0.24 A	53.00 W	0.95	4300 lm
	QTP5 2x49	4008321329431	0.49 A	106.00 W	0.99	
	QTP5 2x49	4008321329431	0.49 A	106.00 W	0.99	4300 lm

Product datasheet

Product name	Product name ECG	EAN	Number of lighting outlets
HO 49 W/830	QT-FIT 5 1x49	4008321832139	1
	QT-FIT 5 2x49	4008321832153	2
	QTi 1x28/54/35/49 GII	4008321383358	1
	QTi 1x35/49/80 DIM	4050300870540	1
	QTi 1x35/49/80 GII	4008321383372	1
	QTi 2x28/54/35/49 GII	4008321383419	2
	QTi 2x35/49/80 DIM	4050300870984	2
	QTi 2x35/49/80 GII	4008321658951	2
	QTi 2x35/49 DIM	4050300870670	2
	QTi DALI 1x35/49/80 DIM	4050300870342	1
	QTi DALI 2x35/49/80 DIM	4050300870441	2
	QTi DALI 2x35/49 DIM	4050300870403	2
	QTP5 1x49	4008321329370	1
	QTP5 1x49	4008321329370	1
	QTP5 2x49	4008321329431	2
	QTP5 2x49	4008321329431	2