

# Product datasheet

## L 13 W/640

Basic T5 Short | Tubular fluorescent lamps 16 mm, short, with G5 base



- Shops Supermarkets and department stores Public buildings

- Ideal for cost-effective creative illumination and decoration Very good luminous flux maintenance throughout the life of the lamp Slim and compact



## Product datasheet

### Technical data

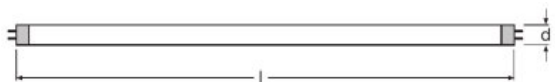
#### Electrical data

Nominal wattage	13.00 W
Rated lamp efficacy (HF data 25 °C)	Under clarification by authority and standardization body
Rated wattage	13.00 W

#### Photometrical data

Rated lamp efficacy (standard condition)	64 lm/W
Color rendering index Ra	≥60
Rated luminous flux	830 lm
Luminous flux at	830 lm
Light color	640
Rated color temperature	4000 K
Nominal luminous flux	830 lm
Light color (designation)	Cool White
Rated LLMF at 2,000 h	0.85
Rated LLMF at 4,000 h	0.78
Rated LLMF at 6,000 h	0.72
Rated LLMF at 8,000 h	0.68
Color temperature	4000 K
Luminous flux	830 lm

#### Dimensions & weight



Tube diameter	16 mm
Length	517.0 mm
Length with base excl. base pins/connection	517.00 mm
Diameter	16.0 mm

## Product datasheet

Product weight	45.00 g
Outer bulb	T16
Maximum diameter	16.0 mm

### Temperatures & operating conditions

Rated ambient temp.w.max.luminous flux	35.0 °C
--	---------

### Lifespan

Lifespan	8000 h <sup>1)</sup>
Rated lamp survival factor at 2,000 h	0.99
Rated lamp survival factor at 4,000 h	0.99
Rated lamp survival factor at 6,000 h	0.95
Rated lamp survival factor at 8,000 h	0.81
Operation mode LLMF/LSF	HF
Rated lamp life time	10000 h

<sup>1)</sup> With CCG/LLCG

### Additional product data

Base (standard designation)	G5
Mercury content	2.5 mg
Appropriate disposal acc. to WEEE	Yes

### Capabilities

Suitable for indoor	Yes
---------------------	-----

### Certificates & standards

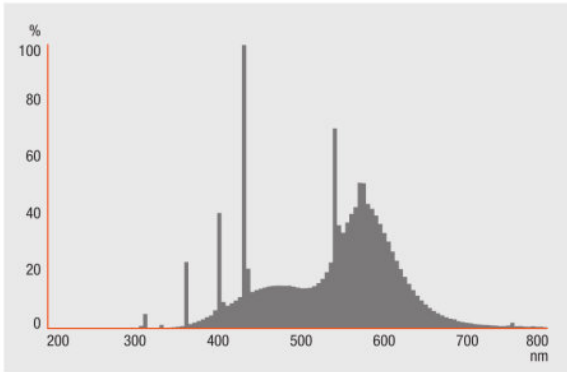
Energy efficiency class	A
Energy consumption	15 kWh/1000h

### Country specific categorizations

Order reference	L 13W/640
-----------------	-----------

### Light Distribution

---



---

FL\_640

---

### System guarantee

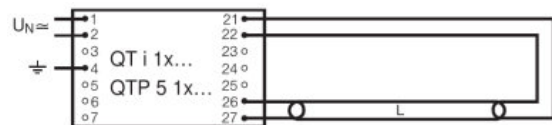
OSRAM System+ Guarantee in combination with OSRAM ECGs



Die Zuleitungen 3 und 4 sollen so kurz wie möglich sein

---

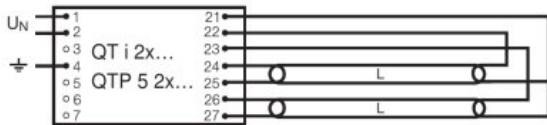
QUICKTRONIC QT 1x



---

QUICKTRONIC INTELLIGENT QT i 1x QTP 5 1x

## Product datasheet



QUICKTRONIC INTELLIGENT QT i 2x QTP 5 2x

### Logistical Data

Product code	Product description	Packaging unit (Pieces/Unit)	Dimensions (length x width x height)	Volume	Gross weight
4050300008974	L 13 W/640	Shipping carton box 25 Pieces Sleeves	550 mm x 115 mm x 106 mm	6.70 dm <sup>3</sup>	1638.00 g

The mentioned product code describes the smallest quantity unit which can be ordered. One shipping unit can contain one or more single products. When placing an order, for the quantity please enter single or multiples of a shipping unit.

### References / Links

For more information on QUICKTRONIC electronic control gear go to

▶ [www.osram.com/QUICKTRONIC](http://www.osram.com/QUICKTRONIC)

### Disclaimer

Subject to change without notice. Errors and omission excepted. Always make sure to use the most recent release.

OSRAM is distribution partner  
of LEDVANCE of LAMPS

**OSRAM**

OSRAM GmbH  
Marcel-Breuer-Strasse 6  
80807 Munich, Germany

## L 13 W/640

Basic T5 Short | Tubular fluorescent lamps 16 mm, short, with G5 base

Product name	Product name ECG	EAN	Nominal current	Nominal wattage + Power loss	Power factor $\lambda$ [PIM]	Luminous flux at 35 °C
L 13 W/640	QT-ECO 1x4-16/220-240 S	4050300638584	0.08 A	15.00 W	0.60 c	950 lm

Product name	Product name ECG	EAN	Number of lighting outlets
L 13 W/640	QT-ECO 1x4-16/220-240 S	4050300638584	1