
Product datasheet

L 13 W/827

LUMILUX T5 Short | Tubular fluorescent lamps 16 mm, short, with G5 base



Product datasheet

Technical data

Electrical data

Nominal wattage	13.00 W
Rated lamp efficacy (HF data 25 °C)	Under clarification by authority and standardization body
Rated wattage	13.00 W

Photometrical data

Rated lamp efficacy (standard condition)	73 lm/W
Color rendering index Ra	≥80
Rated luminous flux	950 lm
Luminous flux at	950 lm
Light color	827
Rated color temperature	2700 K
Nominal luminous flux	950 lm
Light color (designation)	LUMILUX INTERNA
Rated LLMF at 2,000 h	0.80
Rated LLMF at 4,000 h	0.74
Rated LLMF at 6,000 h	0.71
Rated LLMF at 8,000 h	0.69
Color temperature	2700 K
Luminous flux	950 lm

Dimensions & weight



Tube diameter	16 mm
Length	517.0 mm
Length with base excl. base pins/connection	517.00 mm
Diameter	16.0 mm

Product datasheet

Product weight	45.00 g
Outer bulb	T16
Maximum diameter	16.0 mm

Temperatures & operating conditions

Rated ambient temp.w.max.luminous flux	35.0 °C
--	---------

Lifespan

Lifespan	8000 h ¹⁾
Rated lamp survival factor at 2,000 h	0.99
Rated lamp survival factor at 4,000 h	0.99
Rated lamp survival factor at 6,000 h	0.95
Rated lamp survival factor at 8,000 h	0.81
Operation mode LLMF/LSF	HF
Rated lamp life time	10000 h

¹⁾ With CCG/LLCG

Additional product data

Base (standard designation)	G5
Mercury content	2.5 mg
Appropriate disposal acc. to WEEE	Yes

Capabilities

Suitable for indoor	Yes
---------------------	-----

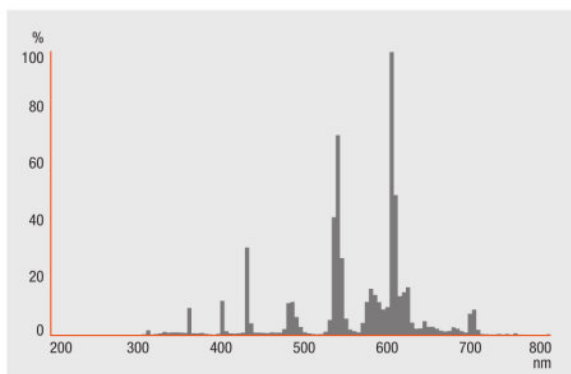
Certificates & standards

Energy efficiency class	A
Energy consumption	15 kWh/1000h

Country specific categorizations

Order reference	L 13W/827
-----------------	-----------

Light Distribution



FL_827

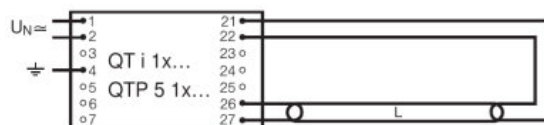
System guarantee

OSRAM System+ Guarantee in combination with OSRAM ECGs



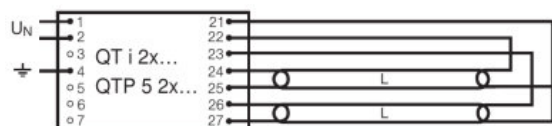
Die Zuleitungen 3 und 4 sollen so kurz wie möglich sein

QUICKTRONIC QT 1x



QUICKTRONIC INTELLIGENT QT i 1x QTP 5 1x

Product datasheet



QUICKTRONIC INTELLIGENT QT i 2x QTP 5 2x

Logistical Data

Product code	Product description	Packaging unit (Pieces/Unit)	Dimensions (length x width x height)	Volume	Gross weight
4050300008967	L 13 W/827	Shipping carton box 25 Pieces Sleeves	546 mm x 114 mm x 109 mm	6.78 dm ³	1634.00 g

The mentioned product code describes the smallest quantity unit which can be ordered. One shipping unit can contain one or more single products. When placing an order, for the quantity please enter single or multiples of a shipping unit.

References / Links

For more information on QUICKTRONIC electronic control gear go to

▶ www.osram.com/QUICKTRONIC

Disclaimer

Subject to change without notice. Errors and omission excepted. Always make sure to use the most recent release.

OSRAM is distribution partner
of LEDVANCE of LAMPS

OSRAM

OSRAM GmbH
Marcel-Breuer-Strasse 6
80807 Munich, Germany